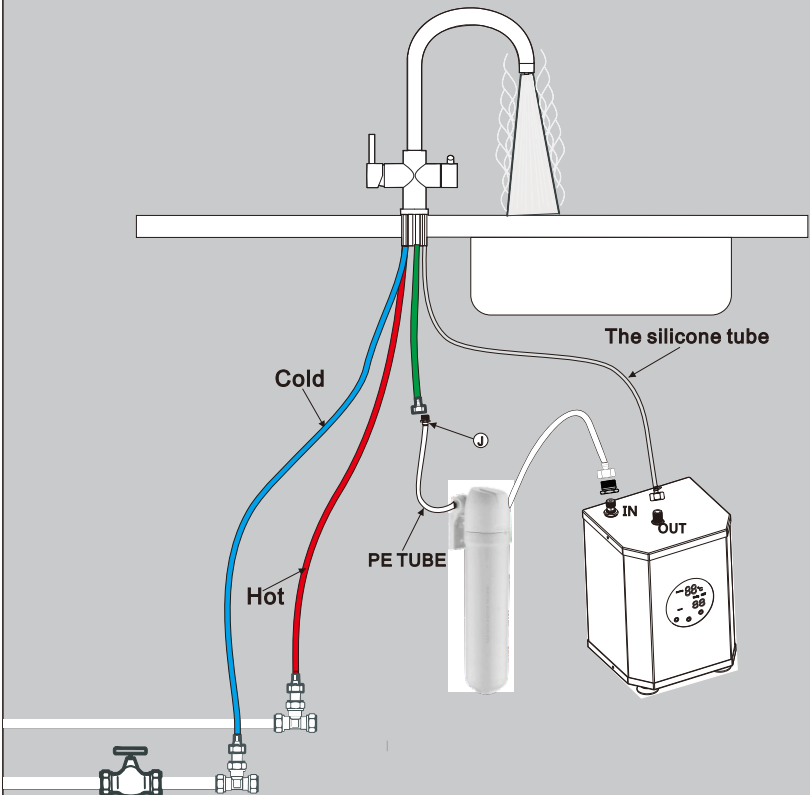
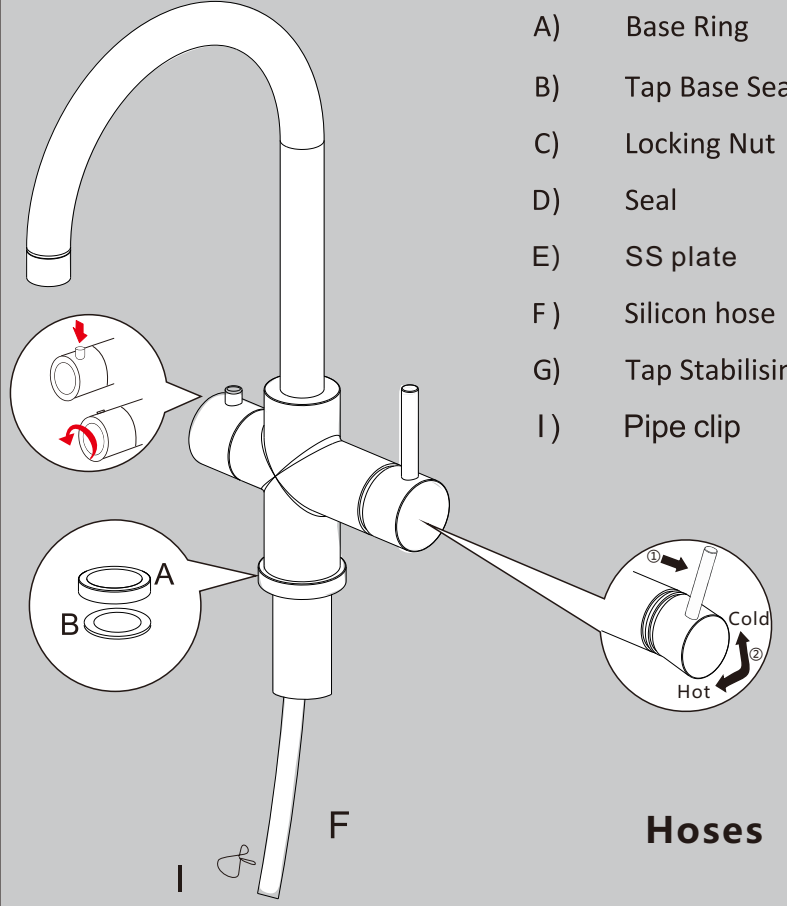


Installation diagram



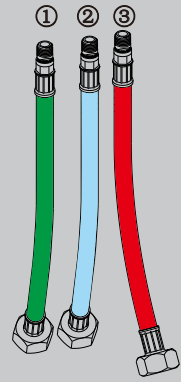
CONNECTORS

NO	Description	Usage	Picture	Packed in
J	G 1/2" male & PE tube adaptor	Connecting with G 1/2" Female hose from tap		Tap box
K	G 1/2" (Female) & PE tube adaptor	Connect to connection marked Fitting No.3		Tap box
L	G 3/8" Female & G 1/2" male adaptor	Connect to part "IN" of boiler		Boiler box
M	G 3/8" female & quick connection adaptor	Connect to Part "OUT" of boiler and connect silicon tube		Boiler box

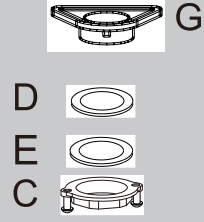


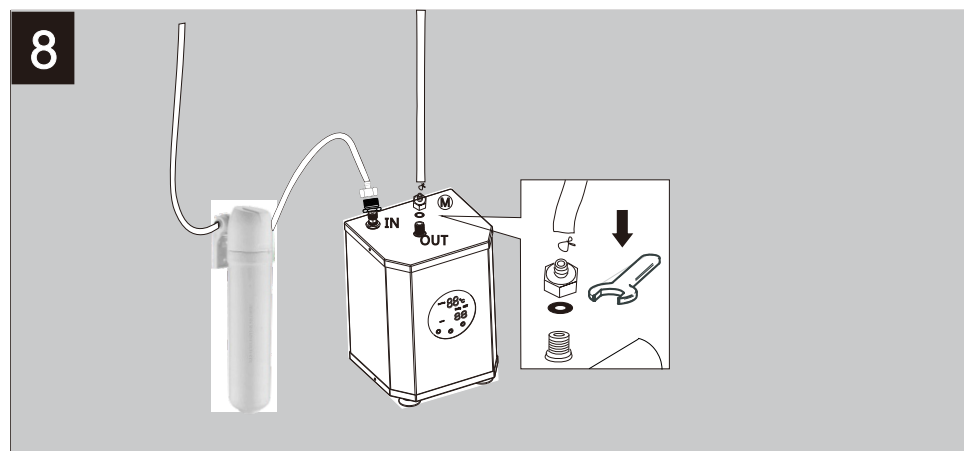
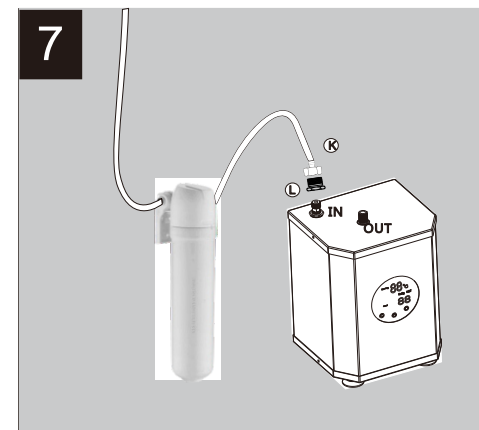
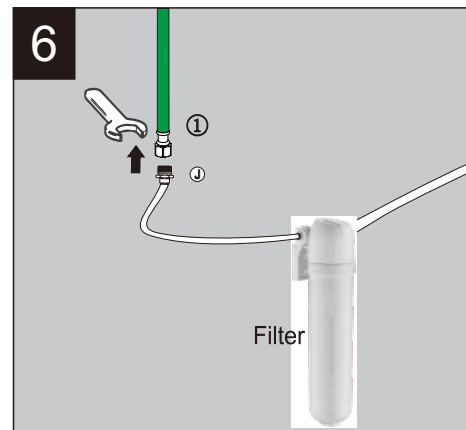
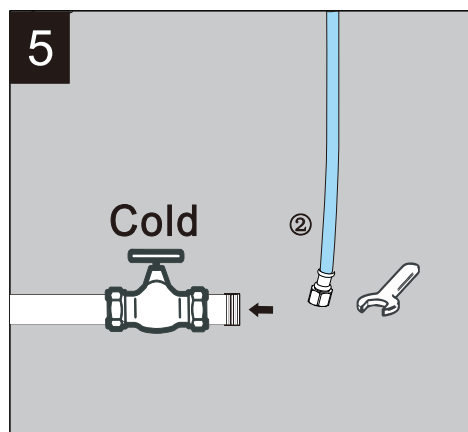
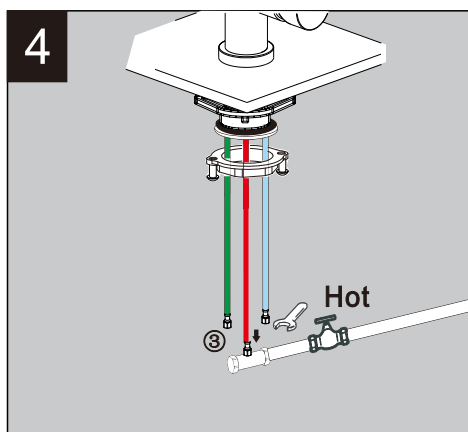
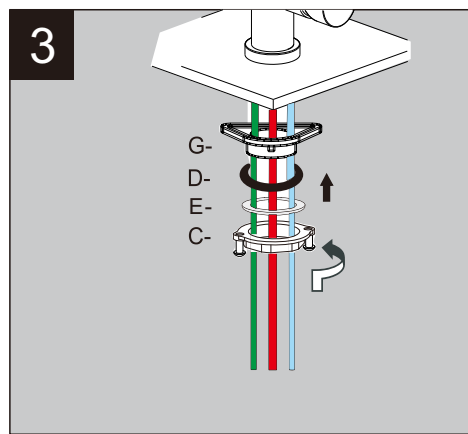
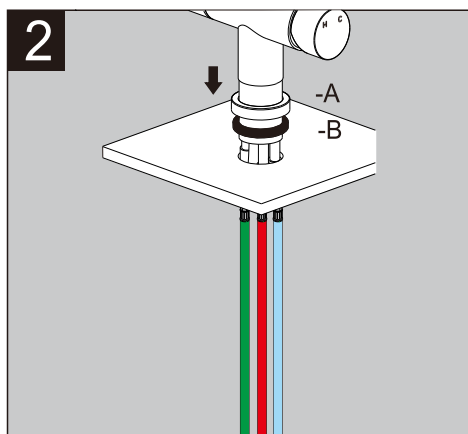
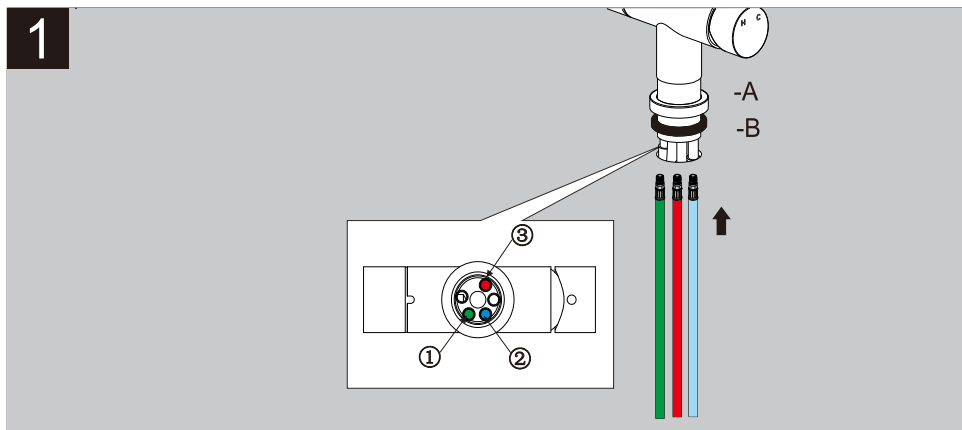
- A) Base Ring
- B) Tap Base Seal
- C) Locking Nut
- D) Seal
- E) SS plate
- F) Silicon hose
- G) Tap Stabilising ring
- I) Pipe clip

Hoses



Fixing sets





1. Install the 3 hoses onto the tap as the picture
2. Put the tap into the sink hole
3. Fix the tap onto the sink according to the picture. Remove G if countertop is too thick.
4. Connect the Red hose with hot water supply
5. Connect the Blue hose with cold water supply
6. Connect the "tap to filter" hose with the filter "IN" via Part J and white PE pipe
7. Connect the Filter "OUT" and Tank "IN" via Part K & L and white PE pipe.
8. Connect the silicon hose with the Tank "out" via Part M. Use the pipe clip to tighten it.
Do not lose the seal!

Congratulations! You have now finished the installation. Before you plug in the tank, open the boiling tap handle to fill the tank until there's water coming out from the tap. Open the tap and check if there's any leakage at all connections.

Now you can enjoy one of the most fantastic boiling water tap!